



# 2017-18 User-Friendly Report Templates

For state customization



# What are User Friendly Reports?

- The NCI User-Friendly Reports
  - Help self-advocates, individuals with disabilities, and families to understand and interact with the NCI data.
  - The reports present small groupings of data in an easy-to-understand format—reinforcing the findings with pie charts, words, and pictures.
- Beginning with the 2017-18 report cycle, NCI will make templates available to states so they can build their own User-Friendly Reports

Templates  
around  
issues/domains  
important to  
the lives of  
people with  
IDD

- 2017-18:
  - 5 templates available:
    - Choice
    - Community Inclusion
    - Employment and Day Activities
    - Relationships
    - Rights
- In addition to customizing the state name throughout the report, you can follow the steps in the next slides to customize your report

# Pre-customization:

Do you have a paid job in the community?



Insert Chart [here](#)

Insert stick figures here

NCI tells us **#** out of every **10** people said **they have a paid job in the community.**

# Do you have a paid job in the community?



Insert stick figures here

Insert Chart here – [data](#)

NCI tells us **#** out of every **#** they have a paid job in the community

Clicking 'data' opens National report page with data

www.nationalreport.org

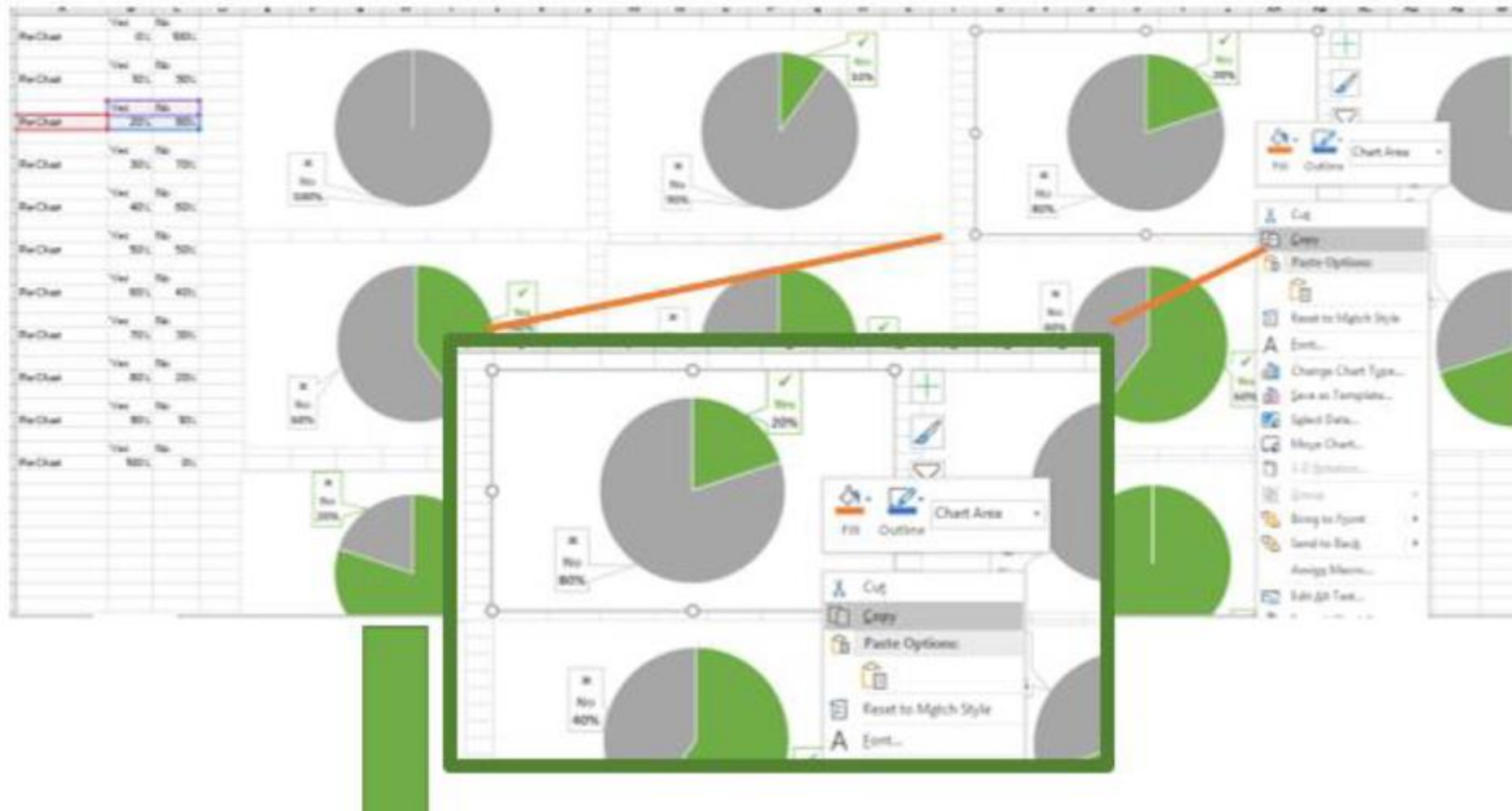
Table 10: Top 10 countries in the community (not necessarily by population) that have the highest employment rates

Country	Population (Million)	2018 employment rate (%)	2017 employment rate (%)	2016 employment rate (%)	2015 employment rate (%)	2014 employment rate (%)	2013 employment rate (%)	2012 employment rate (%)	2011 employment rate (%)	2010 employment rate (%)
USA	312.1	58.1	57.8	57.5	57.2	56.9	56.6	56.3	56.0	55.7
UK	63.1	57.8	57.5	57.2	56.9	56.6	56.3	56.0	55.7	55.4
Canada	35.7	57.5	57.2	56.9	56.6	56.3	56.0	55.7	55.4	55.1
Australia	22.5	57.2	56.9	56.6	56.3	56.0	55.7	55.4	55.1	54.8
Germany	82.0	56.9	56.6	56.3	56.0	55.7	55.4	55.1	54.8	54.5
France	65.4	56.6	56.3	56.0	55.7	55.4	55.1	54.8	54.5	54.2
Italy	60.3	56.3	56.0	55.7	55.4	55.1	54.8	54.5	54.2	53.9
Spain	45.9	56.0	55.7	55.4	55.1	54.8	54.5	54.2	53.9	53.6
Japan	127.8	55.7	55.4	55.1	54.8	54.5	54.2	53.9	53.6	53.3
South Korea	50.7	55.4	55.1	54.8	54.5	54.2	53.9	53.6	53.3	53.0

Table 11: Top 10 countries in the community (not necessarily by population) that have the lowest employment rates

Country	Population (Million)	2018 employment rate (%)	2017 employment rate (%)	2016 employment rate (%)	2015 employment rate (%)	2014 employment rate (%)	2013 employment rate (%)	2012 employment rate (%)	2011 employment rate (%)	2010 employment rate (%)
USA	312.1	58.1	57.8	57.5	57.2	56.9	56.6	56.3	56.0	55.7
UK	63.1	57.8	57.5	57.2	56.9	56.6	56.3	56.0	55.7	55.4
Canada	35.7	57.5	57.2	56.9	56.6	56.3	56.0	55.7	55.4	55.1
Australia	22.5	57.2	56.9	56.6	56.3	56.0	55.7	55.4	55.1	54.8
Germany	82.0	56.9	56.6	56.3	56.0	55.7	55.4	55.1	54.8	54.5
France	65.4	56.6	56.3	56.0	55.7	55.4	55.1	54.8	54.5	54.2
Italy	60.3	56.3	56.0	55.7	55.4	55.1	54.8	54.5	54.2	53.9
Spain	45.9	56.0	55.7	55.4	55.1	54.8	54.5	54.2	53.9	53.6
Japan	127.8	55.7	55.4	55.1	54.8	54.5	54.2	53.9	53.6	53.3
South Korea	50.7	55.4	55.1	54.8	54.5	54.2	53.9	53.6	53.3	53.0

Copy the appropriate pie chart from the 'Pie Charts' tab in Excel and paste to Word

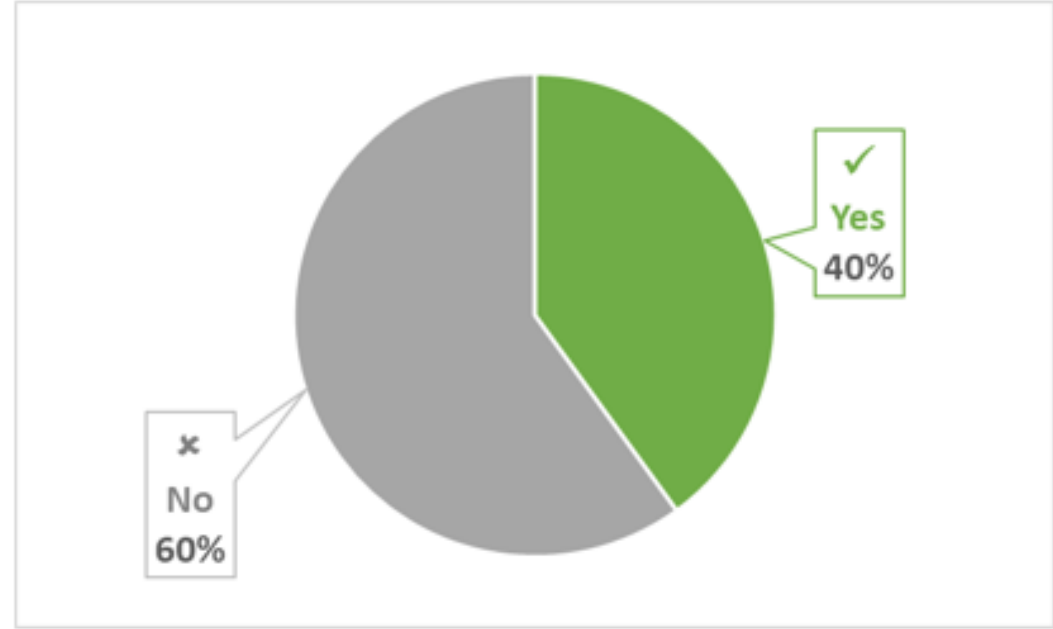
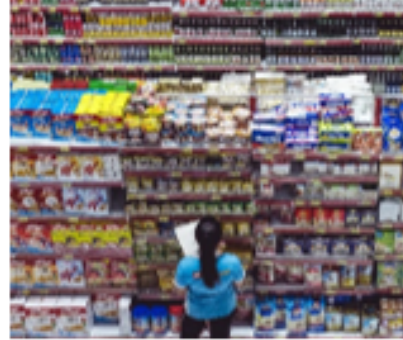


Copy the appropriate number out of 10 figures from the 'Out of 10' tab in Excel and paste to Word

The image illustrates the process of copying data from Excel to Word. On the left, an Excel spreadsheet displays a grid of 10 person icons. A context menu is open over the grid, with the 'Copy' option selected. A large green arrow points from the Excel grid to the Word document on the right. The Word document shows a pie chart titled 'Do you have a paid job in the community?'. The chart has two segments: a green segment representing 'Yes' at 20% and a grey segment representing 'No' at 80%. Below the chart, a text box contains the text '... us 2 out of every 10 people said they paid job in the community.' A callout box points to the green segment of the pie chart.

Response	Percentage
Yes	20%
No	80%

# Do you have a paid job in the community?



NCI tells us **4** out of every **10** people said they have a paid job in the community.



Questions?



Dorothy or Steph are happy to help!



[dhiersteiner@hsri.org](mailto:dhiersteiner@hsri.org)



[sgiordano@hsri.org](mailto:sgiordano@hsri.org)